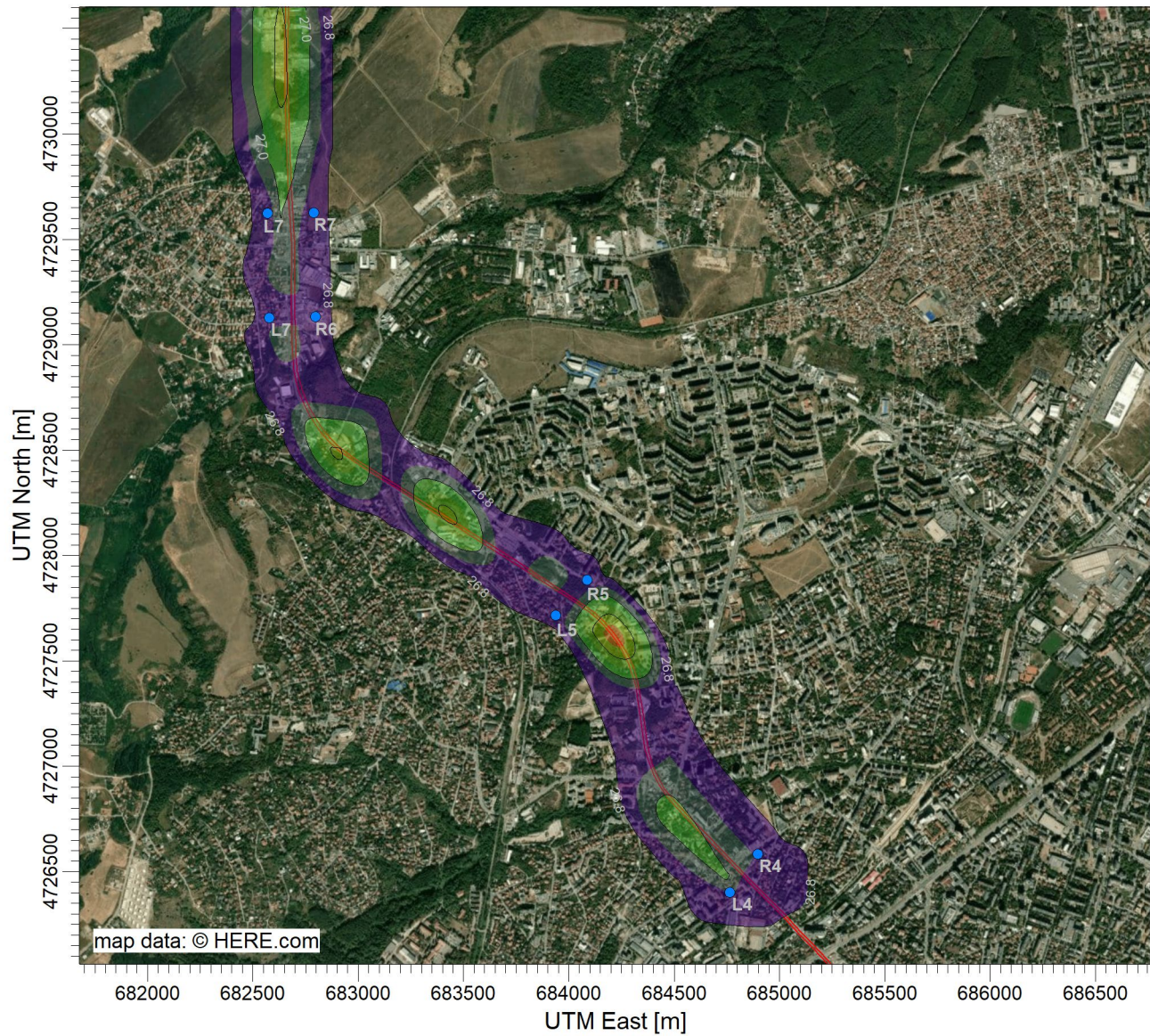


PROJECT TITLE:

Приземна средногодишна концентрация на прах (PM)

Пътен участък 2



Max: 27.4 [ $\mu\text{g}/\text{m}^3$ ] at (684216.94, 4727619.73)

$\mu\text{g}/\text{m}^3$



COMMENTS:

R4 - 26,89  $\mu\text{g}/\text{m}^3$   
L4 - 26,90  $\mu\text{g}/\text{m}^3$   
R5 - 26,83  $\mu\text{g}/\text{m}^3$   
L5 - 26,82  $\mu\text{g}/\text{m}^3$   
R6 - 26,85  $\mu\text{g}/\text{m}^3$   
L6 - 26,82  $\mu\text{g}/\text{m}^3$   
R7 - 26,84  $\mu\text{g}/\text{m}^3$   
L7 - 26,83  $\mu\text{g}/\text{m}^3$

SOURCES:

**8**

RECEPTORS:

**449**

OUTPUT TYPE:

**Concentration**

MAX:

**27.4  $\mu\text{g}/\text{m}^3$**

COMPANY NAME:

LEGEND:

— Road

SCALE:

1:32,000

0

1 km

DATE:

**01/15/2026**

PROJECT NO.:

**SOP\_Air/EIA\_2026**

